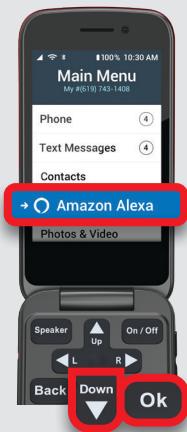


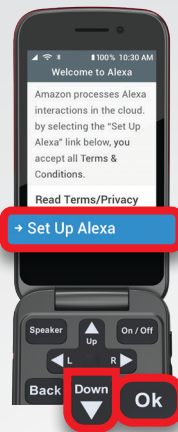
Getting Started

How to Set up Alexa with Amazon Account Sign-In

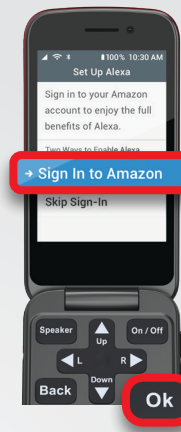
Connection of your Amazon account to Alexa on your Jitterbug Flip2 allows for personalized answers to questions like “Alexa, what is the weather forecast?” or “Alexa, what is the current time?” based on the location registered in your Amazon account.



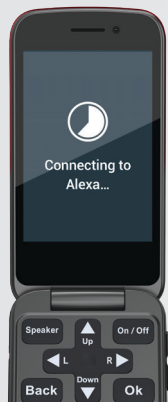
- 1 From the **Main Menu** screen, press the **Down** arrow until “Amazon Alexa” is highlighted. Press **Ok**.



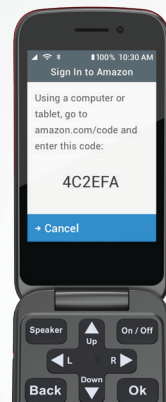
- 2 On the **Welcome to Alexa** screen, press the **Down** arrow to highlight “Set Up Alexa.” Press **Ok**.



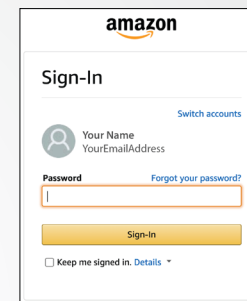
- 3 The **Set Up Alexa** screen displays with “Sign In to Amazon” highlighted. Press **Ok**.



- 4 The **Connecting to Alexa...** transition screen displays.



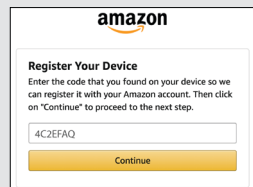
- 5 The **Sign In to Amazon** screen displays with the code you will enter on a computer or tablet to connect your Amazon account to Alexa on your Jitterbug Flip2.



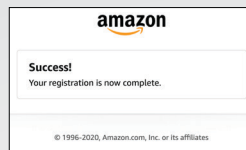
- 6 From your computer/ tablet, go to www.amazon.com/us/code and sign into your Amazon account. If you do not have an Amazon account, you will need to create one.

Getting Started

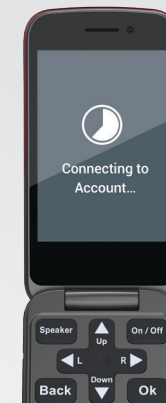
How to Set up Alexa with Amazon Account Sign-In (cont.)



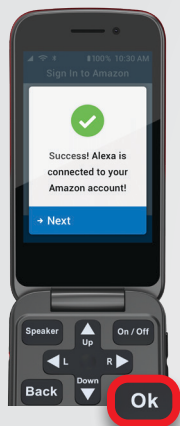
- 13** Enter the code from the screen of the Jitterbug Flip2 into the Amazon registration box. Click "Continue."



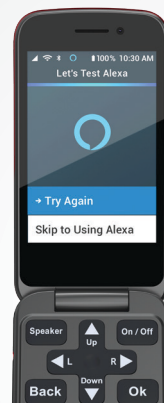
- 14** The Amazon registration completion screen displays on the web page.



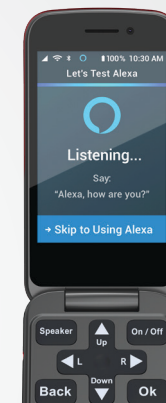
- 9** The Connecting to Account... screen automatically displays on the Jitterbug Flip2.



- 10** The Success! Alexa is connected to your Amazon account! screen displays with "Next" highlighted. Press Ok.



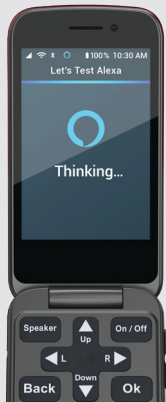
- 11** The Let's Test Alexa screen displays.



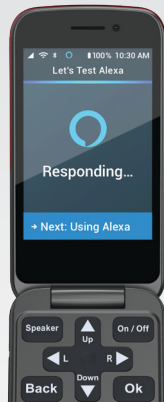
- 12** The Let's Test Alexa: Listening... Say "Alexa, how are you?" transition screen displays. Say out loud: "Alexa, how are you?"

Getting Started

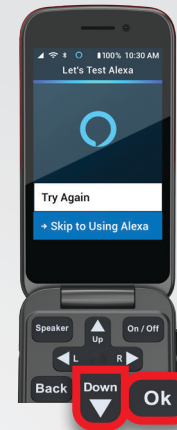
How to Set up Alexa with Amazon Account Sign-In (cont.)



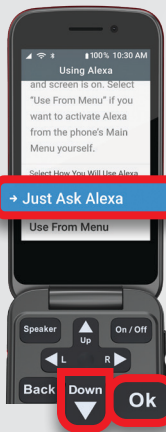
- 13 The Let's Test Alexa: **Thinking** transition screen displays.



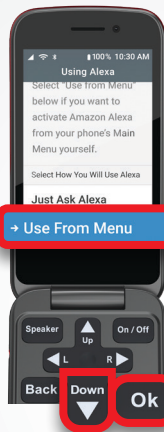
- 14 The Let's Test Alexa: **Responding** transition screen displays while Alexa answers your question out loud.



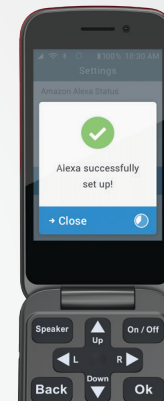
- 15 The Let's Test Alexa screen displays again. Press the **Down** arrow to highlight "Skip to Using Alexa." Press **Ok**.



- 16 The **Using Alexa** screen displays. Press the **Down** arrow to highlight either "Just Ask Alexa" or "Use from Menu." Press **Ok**.



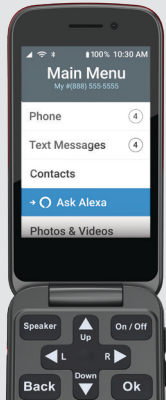
- i **NOTE:** The "Just Ask Alexa" setting allows you to ask Alexa questions after simply flipping open the phone. The "Use from Menu" setting adds additional steps of pressing the Down arrow to highlight "Amazon Alexa" on the **Main Menu** and pressing Ok before you can ask Alexa questions.



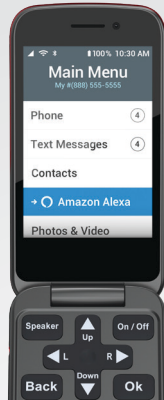
- 17 The **Alexa successfully set up!** screen displays. The clock icon will display next to "Close." If you do not press **Ok** in 5 seconds, the screen will close automatically.

Getting Started

How to Set up Alexa with Amazon Account Sign-In (cont.)



i If you selected the “Just Ask Alexa” setting, the **Main Menu** screen will display “Ask Alexa” in the list in place of “Amazon Alexa.”



i If you selected the “Use From Menu” setting, the **Main Menu** screen will still display “Amazon Alexa” in the list.

If you'd like to use your voice to call, text and ask questions about your Jitterbug Flip2 and Lively account, you will need to also set up the Lively skill.